

4,350
MEMBERS &
GROWING!

Your Feedback is Essential to Improving Our Programs

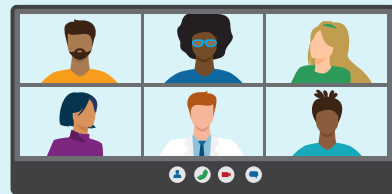
We are grateful to our Community Insights Network, established in 2017 and made up mostly of ABIM Board Certified Physicians, who share feedback and insights that are invaluable to enhancing our programs for all physicians.



Maintaining Open Lines of Communication in 2023

10 Diplomate Panel Meetings

11 BPR Panelists, 12 LKA Panelists



37 One-On-One Interviews

DEI, LKA Score Report, Learning Study



12 Research Participants

DEI



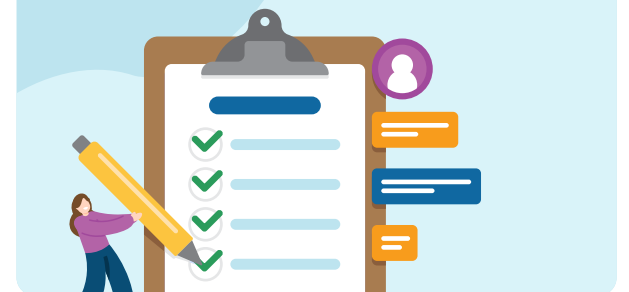
1,950 Community Engagement Emails

Including surveys and other CIN related engagement activities



611 Survey Recipients

BPR rating scale, BPR name, Hematology assessment name



Sharing Stories of Our Members
Just to name a few...



Kara Chaudhary, MD
ABIM Blog, June, 2023



Renée Bullock-Palmer, MD,
FACC, FAHA, FASNC, FASE, FSCCT
ABIM Blog, January, 2023



Ali Khan, MD
MPP, FACP
ABIM Blog, June, 2023