



# Knowledge Gaps Report

## GENERAL INFO

The purpose of the Specialty Knowledge Gaps report is to provide information regarding areas of relative strength and weakness based on physician performance on the American Board of Internal Medicine (ABIM) Longitudinal Knowledge Assessment (LKA®). Each of the charts below shows average performance (the average percentage of questions answered correctly) in the top-level blueprint areas, both overall as well as in relation to various demographic categorizations. It is important to note that these data are based on percent correct scores and not the equated scores provided in the score reports. Because percent correct scores are reported here, differences in performance can be attributed either to the differences in the difficulties of the tests and/or differences in the ability levels of the different candidate groups. Interpretation of this data should be made with care.

## MOST FREQUENT INCORRECT ITEMS

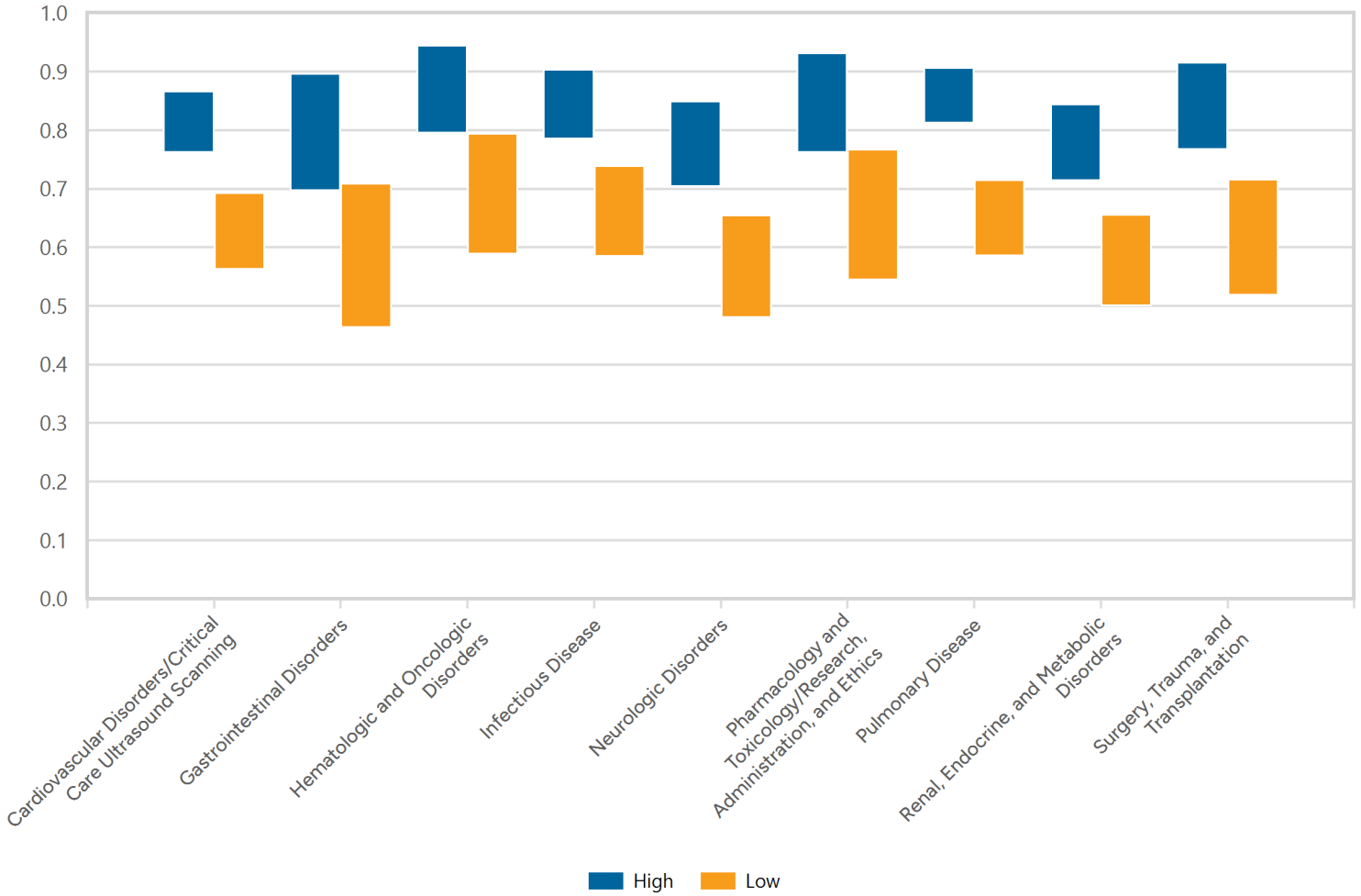
The table below shows the blueprint categories (going down to a maximum of three levels) and their associated tasks for the LKA items that physicians performed lowest on. Specifically, the table shows the 20 items with the lowest percent correct values that were administered to at least 100 physicians. This table can be used in conjunction with the charts below to better understand areas for improvement. Whereas the charts below show specific content areas in which physicians are performing better or worse, this table provides more detailed information identifying the specific topics and content areas in which physicians are not performing well.

| Description   | Task                     |
|---|--------------------------|
| <b>Cardiovascular Disorders/Critical Care Ultrasound Scanning</b>   |                          |
| Arrhythmias<br>Pacemakers and defibrillators  | Treatment/Care Decisions |
| Myocardial disease<br>Peripartum cardiomyopathy   | Treatment/Care Decisions |
| Pericardial disease<br>Cardiac tamponade  | Treatment/Care Decisions |
| Vascular disorders<br>Hypertensive emergency and urgency  | Treatment/Care Decisions |
| <b>Gastrointestinal Disorders</b>   |                          |
| Liver<br>Fulminant hepatic failure [2 Questions]  | Treatment/Care Decisions |
| <b>Hematologic and Oncologic Disorders</b>  |                          |
| Hypercoagulable states<br>Malignancy  | Testing                  |
| <b>Infectious Disease</b>   |                          |
| Cardiovascular infections<br>Catheter-related infections (peripheral, central venous, arterial, pulmonary artery) | Treatment/Care Decisions |

| Description   | Task                                       |
|---|--|
| <b>Neurologic Disorders</b>   |  |
| Brain death   | Testing                                    |
| Brain death   | Treatment/Care Decisions                   |
| Cerebrovascular disease<br>Intracerebral hemorrhage                                       | Risk Assessment/Prognosis/<br>Epidemiology |
| Increased intracranial pressure   | Treatment/Care Decisions                   |
| <b>Pulmonary Disease</b>  |  |
| Respiratory failure<br>Hypercapnic  | Pathophysiology/Basic Science              |
| <b>Renal, Endocrine, and Metabolic Disorders</b>  |  |
| Acid-base disorders<br>Metabolic acidosis [2 Questions]                                   | Diagnosis                                  |
| Acute kidney injury<br>Renal replacement therapy  | Treatment/Care Decisions                   |
| Diabetes mellitus (excluding diabetic ketoacidosis) and energy metabolism<br>Hypoglycemia | Diagnosis                                  |
| Sodium-water balance<br>Hyponatremia  | Diagnosis                                  |
| Thyroid disorders<br>Hyperthyroidism  | Treatment/Care Decisions                   |
| <b>Surgery, Trauma, and Transplantation</b>   |  |
| Trauma<br>Airway injury, tracheobronchial laceration and rupture                          | Testing                                    |

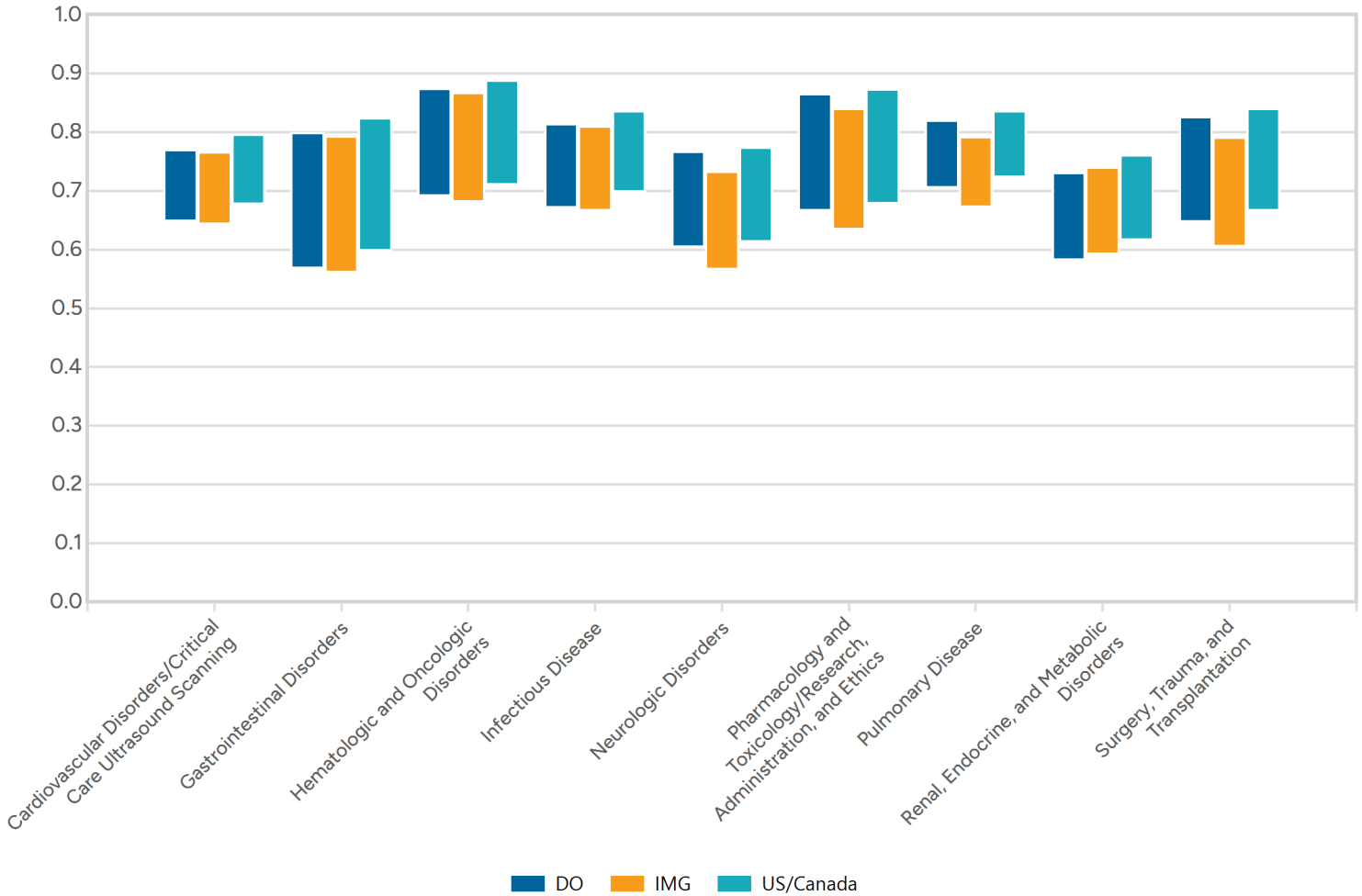
# PERFORMANCE

The chart below shows physician performance on each of the top-level blueprint categories on the LKA by overall current performance on the assessment. High performance is defined as the top 25% of physicians in the LKA in the given discipline and Low performance is defined as the bottom 25% of physicians in the LKA. Please consult the "General Info" section or FAQs for additional information on how you may interpret this chart.



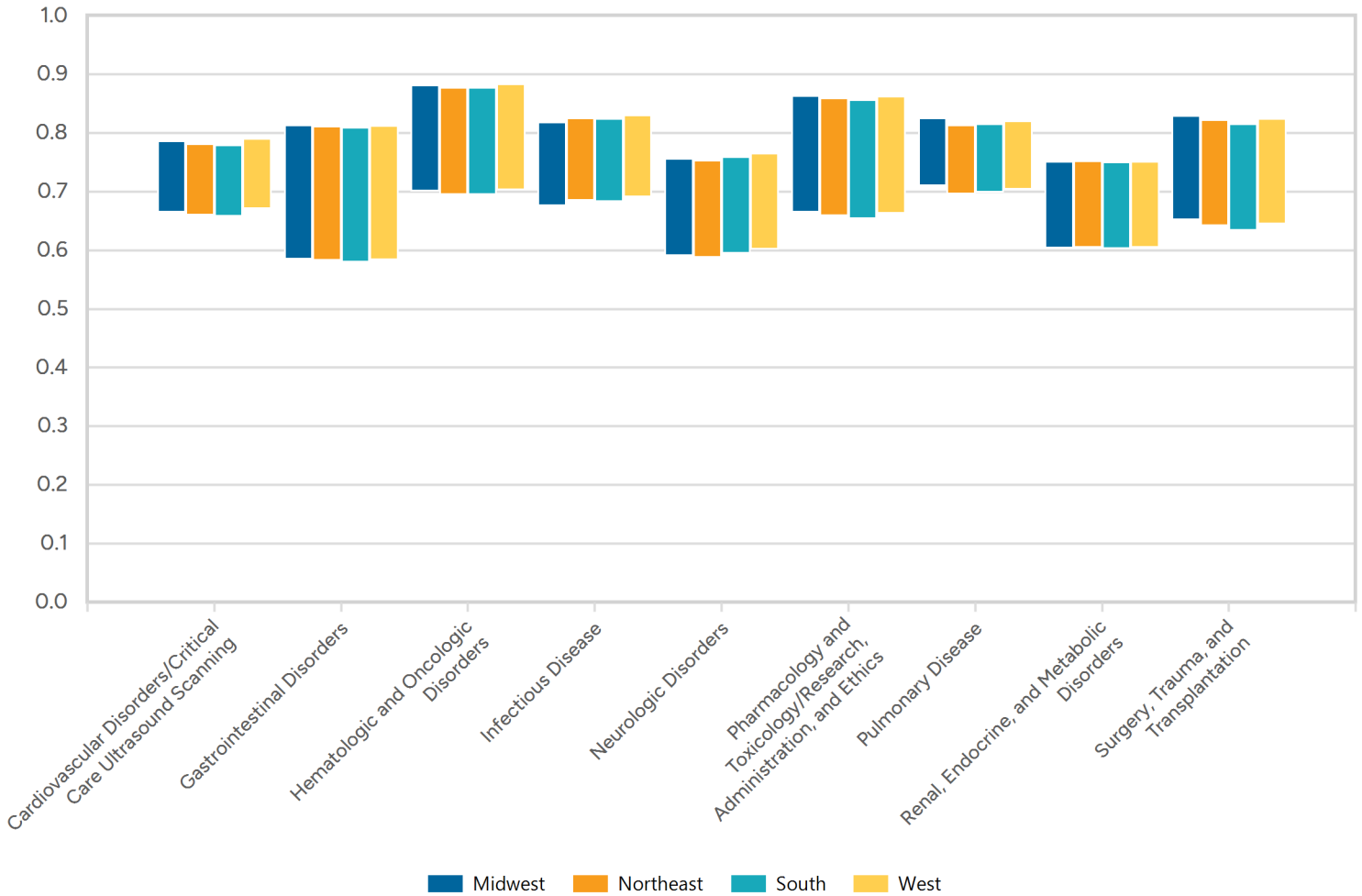
## MEDICAL SCHOOL

The chart below shows physician performance on each of the top-level blueprint categories on the LKA by medical school type (U.S./Canadian Medical School Graduate, International Medical School Graduate, Osteopathic Medical School Graduate). Demographic and content areas for which the bar is higher imply higher performance in those areas. Blueprint areas for which the bar is lower imply lower performance in those areas. Please consult the "General Info" section or FAQs for additional information on how you may interpret this chart.



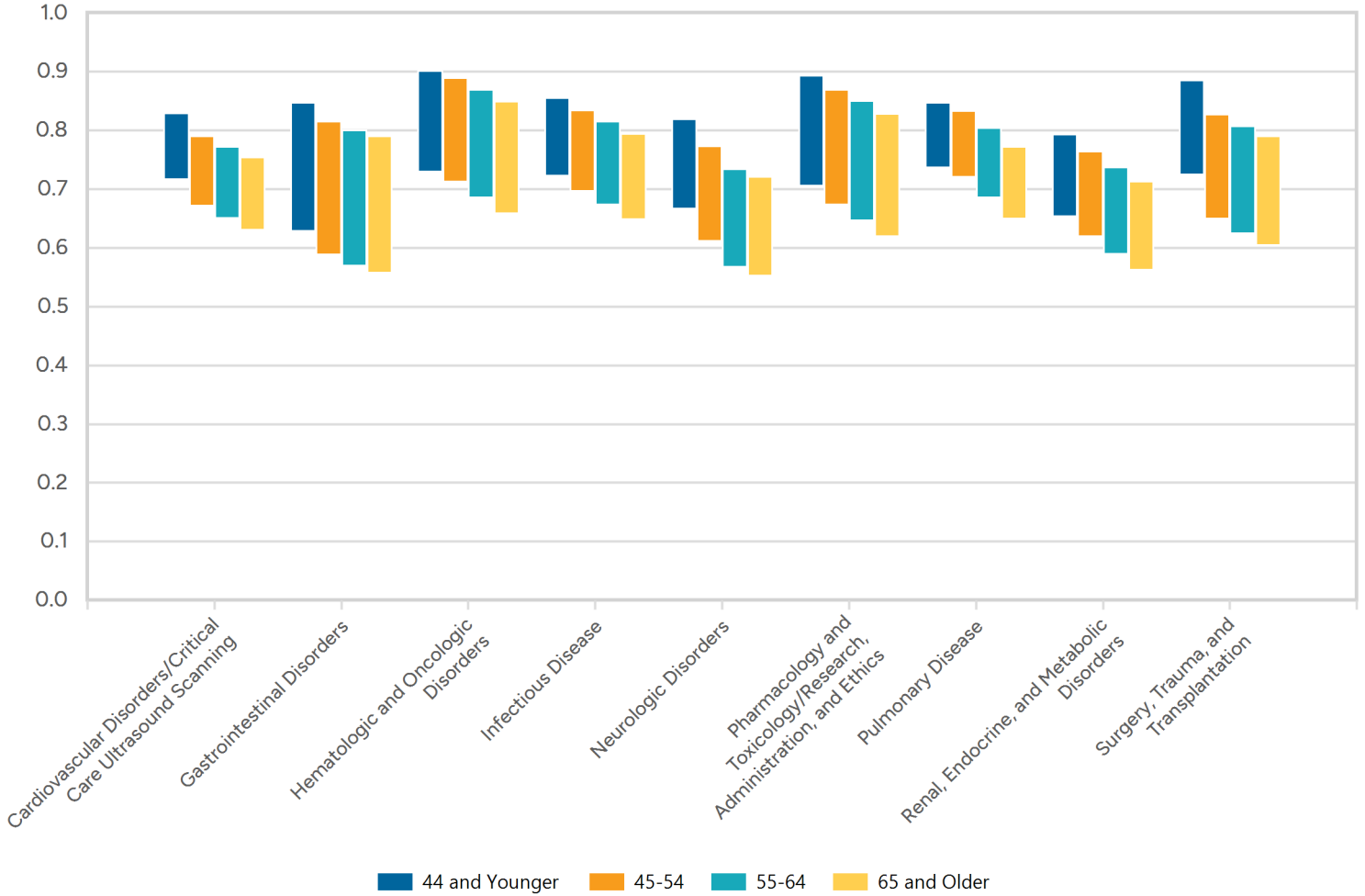
## REGION

The chart below shows physician performance on each of the top-level blueprint categories on the LKA by the U.S. Census Bureau region in which the physician lives (Midwest, Northeast, South, West). Demographic and content areas for which the bar is higher imply higher performance in those areas. Blueprint areas for which the bar is lower imply lower performance in those areas. Please consult the "General Info" section or FAQs for additional information on how you may interpret this chart.



## AGE

The chart below shows physician performance on each of the top-level blueprint categories on the LKA by age (44 and Younger, 45-54, 55-64, 65 and Older). Demographic and content areas for which the bar is higher imply higher performance in those areas. Blueprint areas for which the bar is lower imply lower performance in those areas. Please consult the "General Info" section or FAQs for additional information on how you may interpret this chart.



## OVERALL

The chart below shows overall physician performance on each of the top-level blueprint categories on the LKA. Blueprint areas for which the bar is higher imply higher performance in those areas. Blueprint areas for which the bar is lower imply lower performance in those areas. Please consult the "General Info" section or FAQs for additional information on how you may interpret this chart.

