



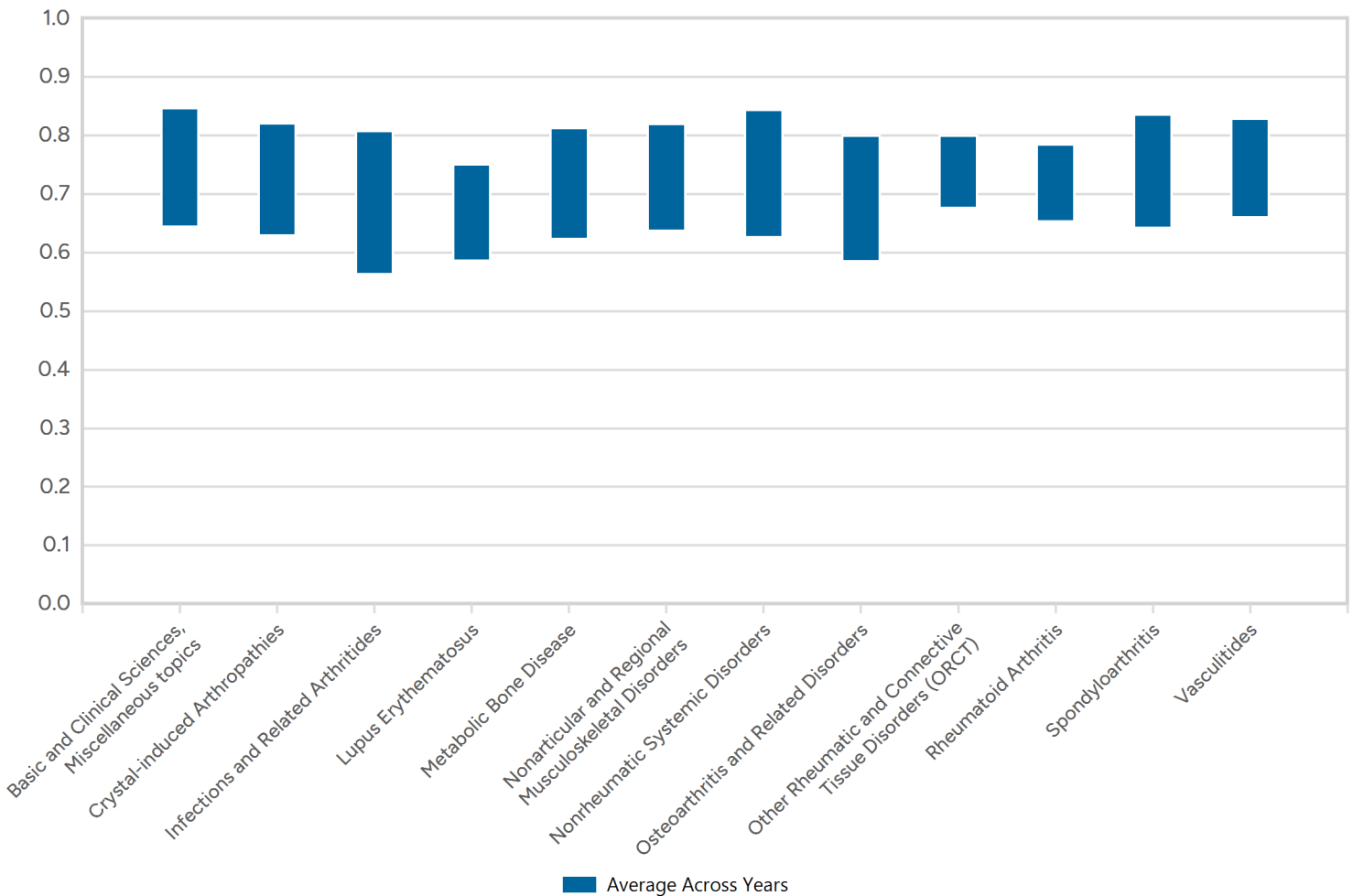
Knowledge Gaps Report

GENERAL INFO

The purpose of the Specialty Knowledge Gaps report is to provide information regarding areas of relative strength and weakness based on physician performance on the American Board of Internal Medicine (ABIM) Longitudinal Knowledge Assessment (LKA®). Each of the charts below shows average performance (the average percentage of questions answered correctly) in the top-level blueprint areas, both overall as well as in relation to various demographic categorizations. It is important to note that these data are based on percent correct scores and not the equated scores provided in the score reports. Because percent correct scores are reported here, differences in performance can be attributed either to the differences in the difficulties of the tests and/or differences in the ability levels of the different candidate groups. Interpretation of this data should be made with care.

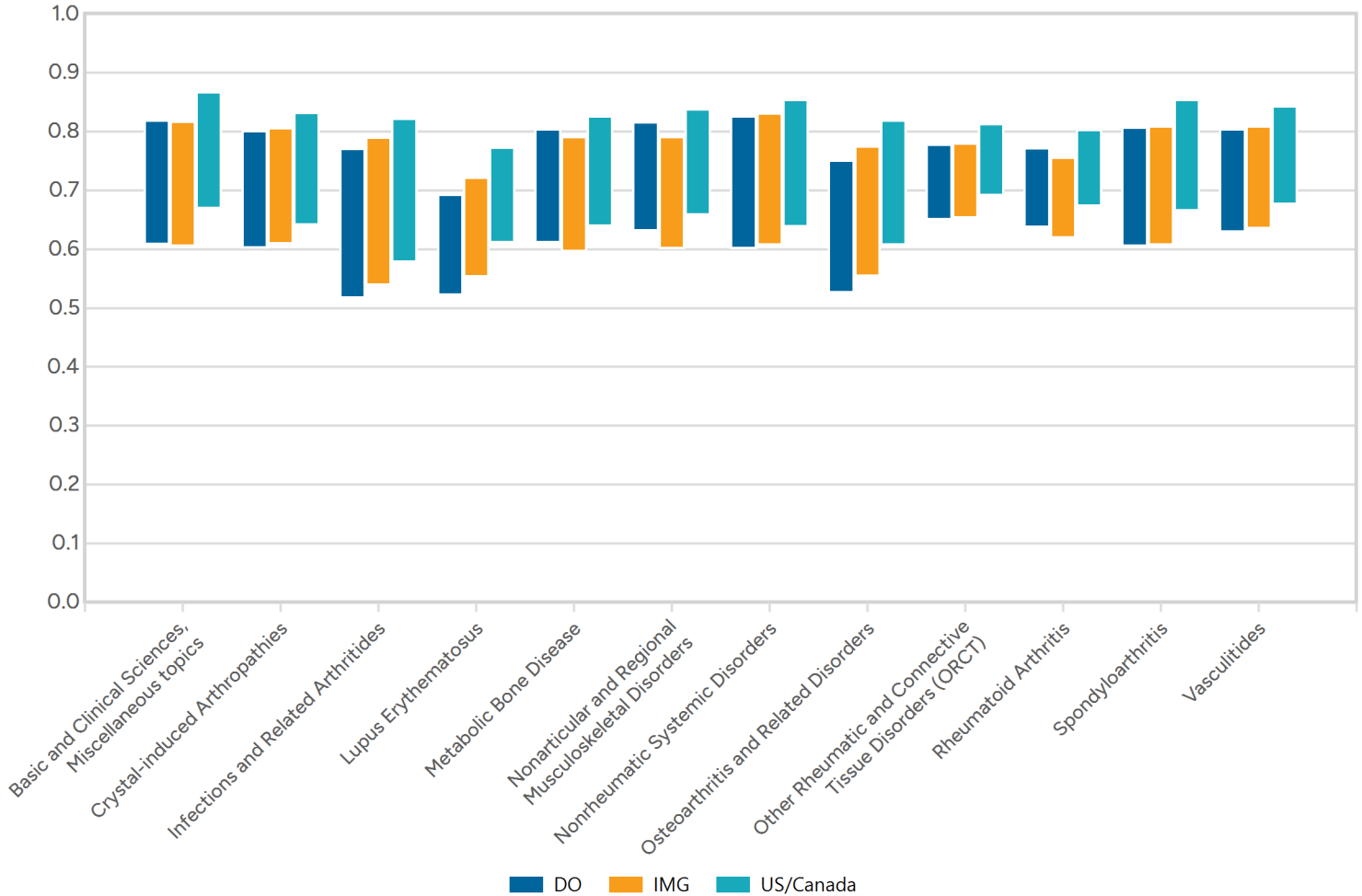
OVERALL

The chart below shows overall physician performance on each of the top-level blueprint categories on the LKA. Blueprint areas for which the bar is higher imply higher performance in those areas. Blueprint areas for which the bar is lower imply lower performance in those areas. Please consult the "General Info" section or FAQs for additional information on how you may interpret this chart.



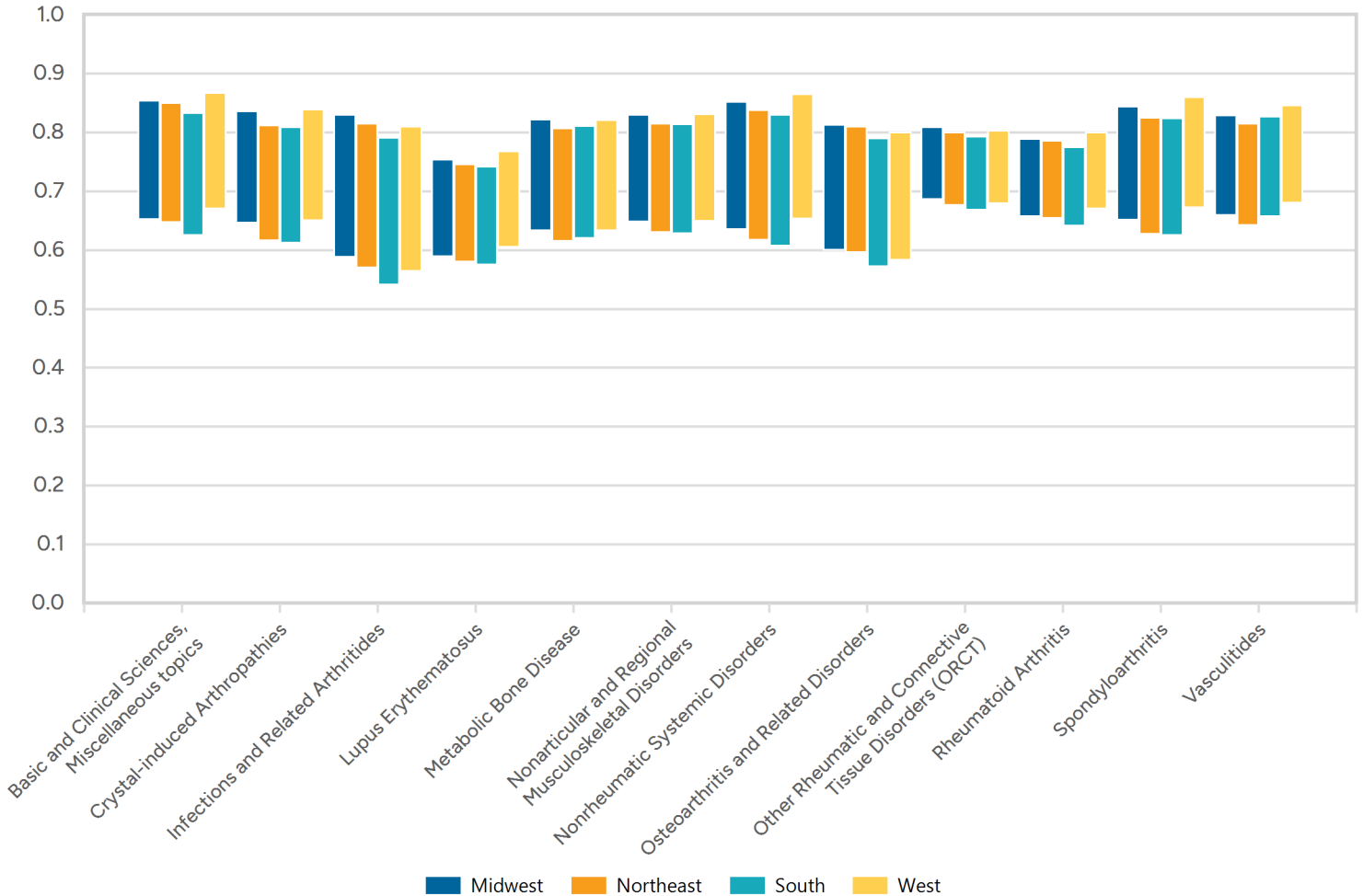
MEDICAL SCHOOL

The chart below shows physician performance on each of the top-level blueprint categories on the LKA by medical school type (U.S./Canadian Medical School Graduate, International Medical School Graduate, Osteopathic Medical School Graduate). Demographic and content areas for which the bar is higher imply higher performance in those areas. Blueprint areas for which the bar is lower imply lower performance in those areas. Please consult the "General Info" section or FAQs for additional information on how you may interpret this chart.



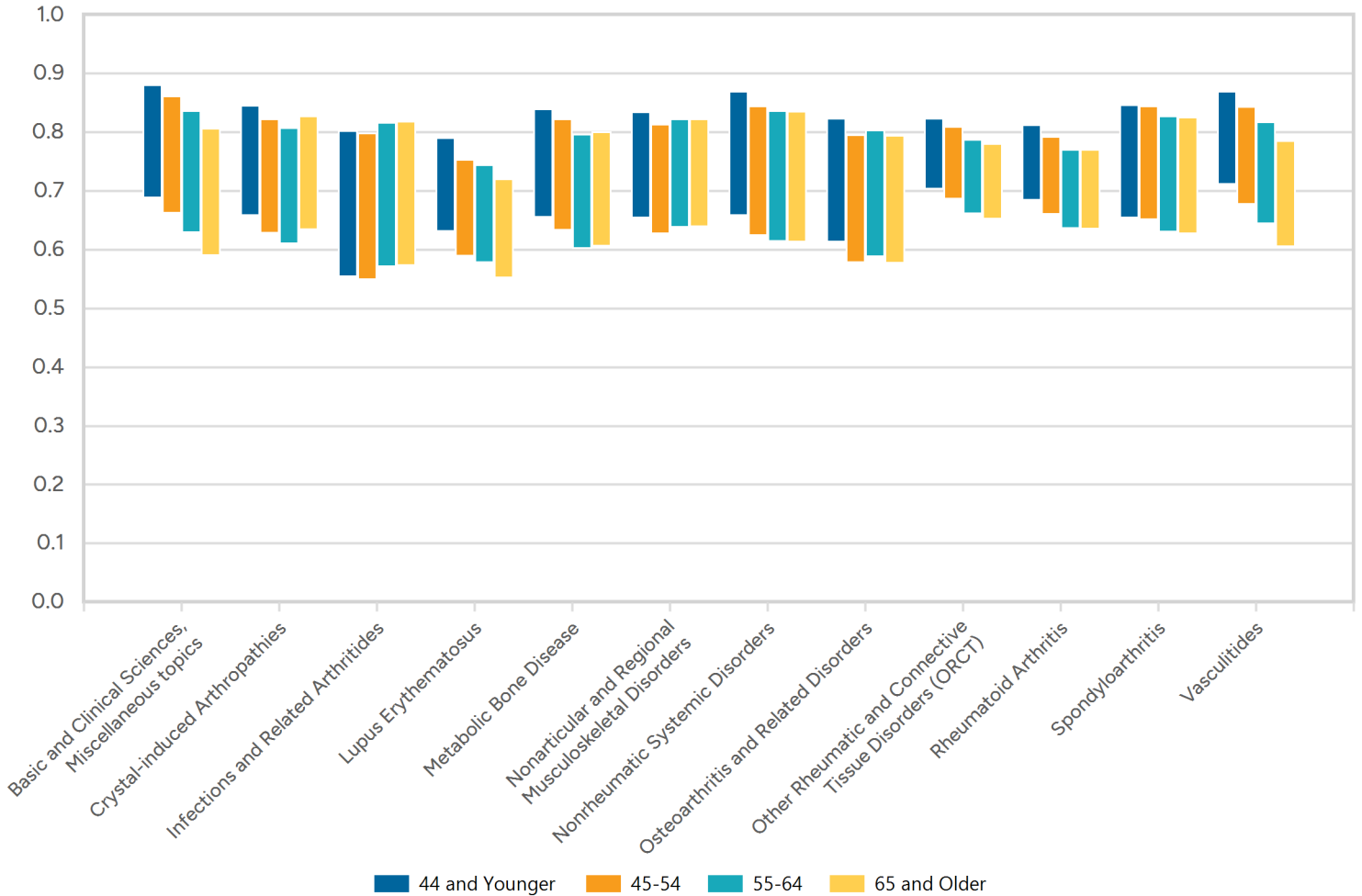
REGION

The chart below shows physician performance on each of the top-level blueprint categories on the LKA by the U.S. Census Bureau region in which the physician lives (Midwest, Northeast, South, West). Demographic and content areas for which the bar is higher imply higher performance in those areas. Blueprint areas for which the bar is lower imply lower performance in those areas. Please consult the "General Info" section or FAQs for additional information on how you may interpret this chart.



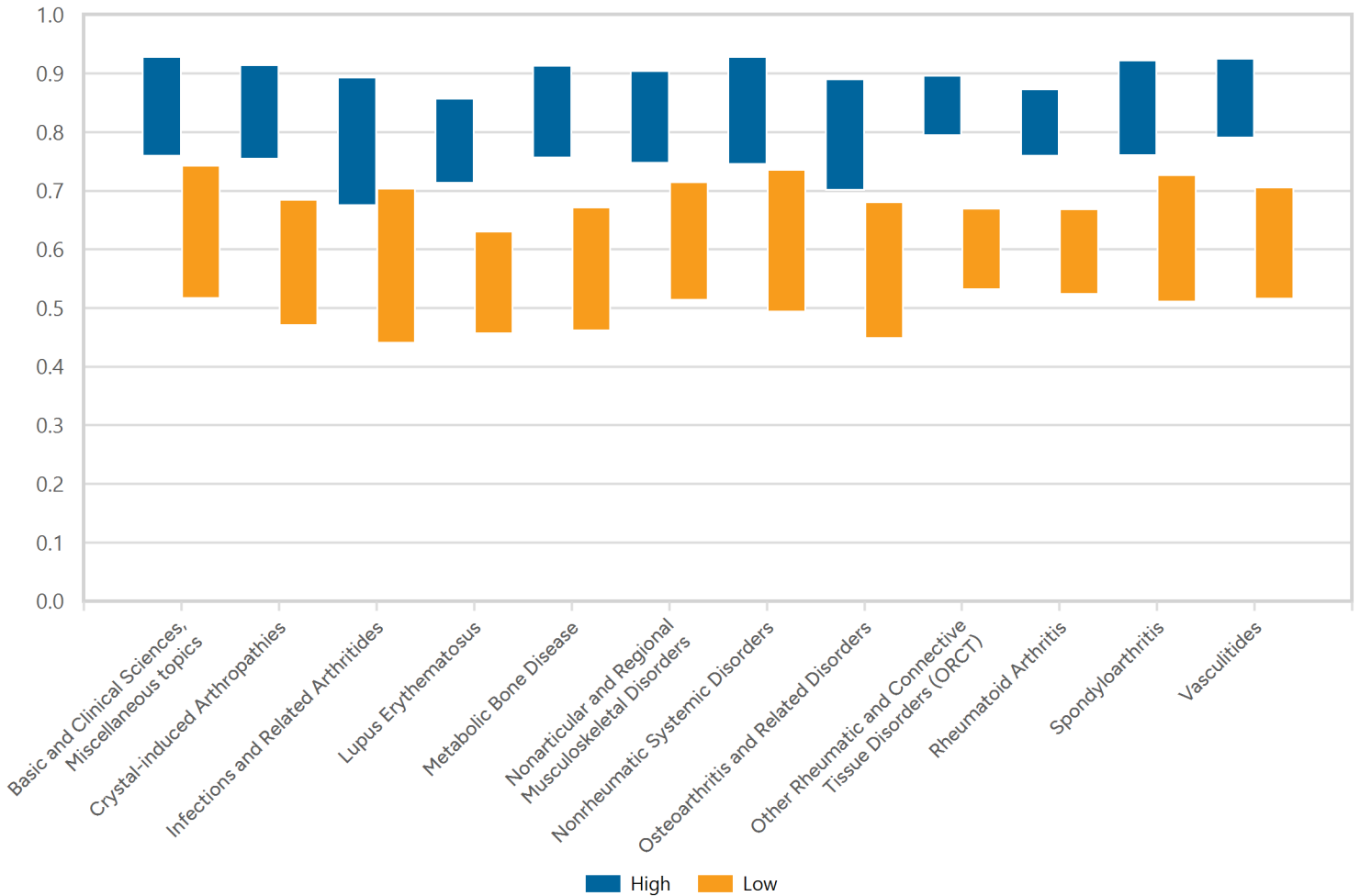
AGE

The chart below shows physician performance on each of the top-level blueprint categories on the LKA by age (44 and Younger, 45-54, 55-64, 65 and Older). Demographic and content areas for which the bar is higher imply higher performance in those areas. Blueprint areas for which the bar is lower imply lower performance in those areas. Please consult the "General Info" section or FAQs for additional information on how you may interpret this chart.



PERFORMANCE

The chart below shows physician performance on each of the top-level blueprint categories on the LKA by overall current performance on the assessment. High performance is defined as the top 25% of physicians in the LKA in the given discipline and Low performance is defined as the bottom 25% of physicians in the LKA. Please consult the "General Info" section or FAQs for additional information on how you may interpret this chart.



MOST FREQUENT INCORRECT ITEMS

The table below shows the blueprint categories (going down to a maximum of three levels) and their associated tasks for the LKA items that physicians performed lowest on. Specifically, the table shows the 20 items with the lowest percent correct values that were administered to at least 100 physicians. This table can be used in conjunction with the charts above to better understand areas for improvement. Whereas the charts above show specific content areas in which physicians are performing better or worse, this table provides more detailed information identifying the specific topics and content areas in which physicians are not performing well.

Description	Task
Basic and Clinical Sciences, Miscellaneous topics	
Pharmacology: dosing, pharmacokinetics, metabolism, mechanisms of action, adverse effects, and drug interactions Intravenous immunoglobulin (IVIG)	Pathophysiology/Basic Science
Pharmacology: dosing, pharmacokinetics, metabolism, mechanisms of action, adverse effects, and drug interactions Systemic antirheumatic drugs	Pathophysiology/Basic Science
Crystal-induced Arthropathies	
Basic calcium phosphate crystal deposition	Diagnosis
Infections and Related Arthritides	
Infections Bacterial (nongonococcal and gonococcal)	Diagnosis
Infections Spirochetal (syphilis, Lyme disease)	Diagnosis
Lupus Erythematosus	
Drug-induced	Diagnosis
Systemic Lupus in pregnancy	Risk Assessment/Prognosis/ Epidemiology
Systemic Pulmonary	Testing
Nonarticular and Regional Musculoskeletal Disorders	
Neuropathies Axial disorders	Testing
Regional musculoskeletal disorders Axial syndromes	Testing
Nonrheumatic Systemic Disorders	
Arthritic and rheumatic disorders Hemochromatosis	Treatment/Care Decisions
Hereditary, congenital, and inborn errors of metabolism associated with rheumatic syndromes Disorders of connective tissue	Diagnosis

Description	Task
Osteoarthritis and Related Disorders	
Osteoarthritis Foot	Testing
Osteoarthritis Other anatomic sites	Diagnosis
Other Rheumatic and Connective Tissue Disorders (ORCT)	
Joint-associated rheumatic diseases Polymyalgia rheumatica (PMR)	Testing
Primarily fibrosing rheumatic diseases Systemic sclerosis	Testing
Primarily fibrosing rheumatic diseases Systemic sclerosis	Treatment/Care Decisions
Rheumatoid Arthritis	
Seropositive rheumatoid arthritis Late disease	Testing
Spondyloarthritis	
Axial Spondyloarthritis Ankylosing spondylitis	Testing
Vasculitides	
Vasculitis associated with probable etiology Hepatitis C virus-associated cryoglobulinemic vasculitis	Treatment/Care Decisions