



A Year in Review with the Community Insights Network



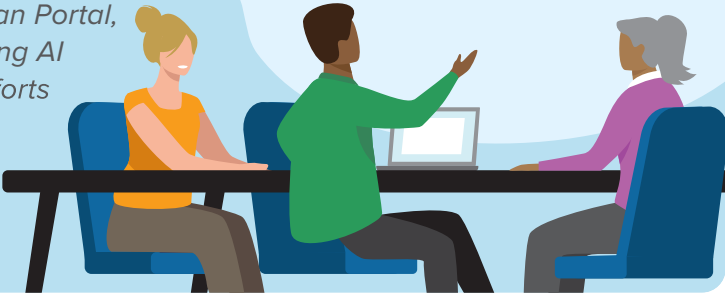
Your Feedback is Essential to Improving Our Programs

Your membership in the Community
Insights Network is invaluable to
enhancing ABIM programs for
all physicians.

Improving Physician Experiences in 2025

30 Physician Advisory Panelists

*Improving the LKA, ABIM website
and Physician Portal,
and reviewing AI
research efforts*



45 One-On-One Interviews

*Recording physician oral histories and
board certification experiences*



55 Research Participants

*Testing usability, design,
and clarity of the website,
Physician Portal, app,
and exam content*



360 Pilot Participants

*Testing a potential
engagement platform*



7 Workshops

*Informing the Needs-Based
Exam Fee Program
and the experiences of
Early Career physicians*



160 Reviewers

*Of the new public
blueprint layout
and design*



Your Insights Contributed to Major Changes Seen in 2025



Adding one minute to
the LKA per question
time limit (January 2025)



Needs-Based Exam Fee
Assistance Pilot Program
(September 2025)



A refreshed Physician
Portal dashboard
(October 2025)



American Board
of Internal Medicine®

Interested in opportunities to share your experience and feedback?
Get involved and connect with us at abim.org/connect